

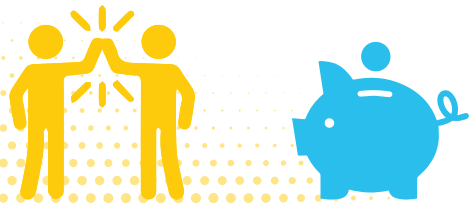
# Magic Bus Programme Evaluation

\*Meta data analysis done by an independent research agency, Monk Prayogshala.

Magic Bus' Life Skills Education programme helps to improve **egalitarian gender attitudes** especially among girls by **22%\***



Magic Bus' Life Skills Education programme participants showed **22.6%\*** improvement in the perceived self-efficacy.

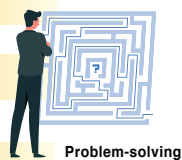


Magic Bus' Life Skills Education programme revealed **90%\*** of adolescent programme participants valued life skills like

Problem-solving

Communication

Being confident



Magic Bus' programme revealed that developing resilience in adolescence **boosts** the chances of a girl attending school by nearly **26%\***



Download the Going Beyond School - An assessment of socio-emotional skills and Magic Bus India Foundation Life Skills Programme.

Impact Survey Technical Report

Impact Survey Non-Technical Report